

HUNTERS®

HERE TO GET *you* THERE

New Close Mill Fold, Silsden

Price £215,000

Property Images

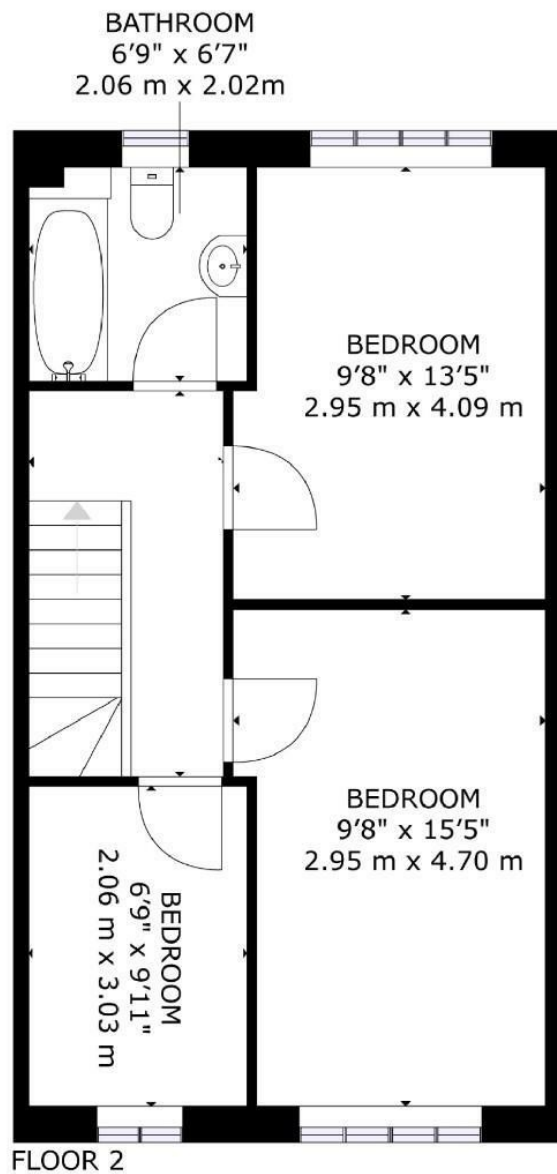
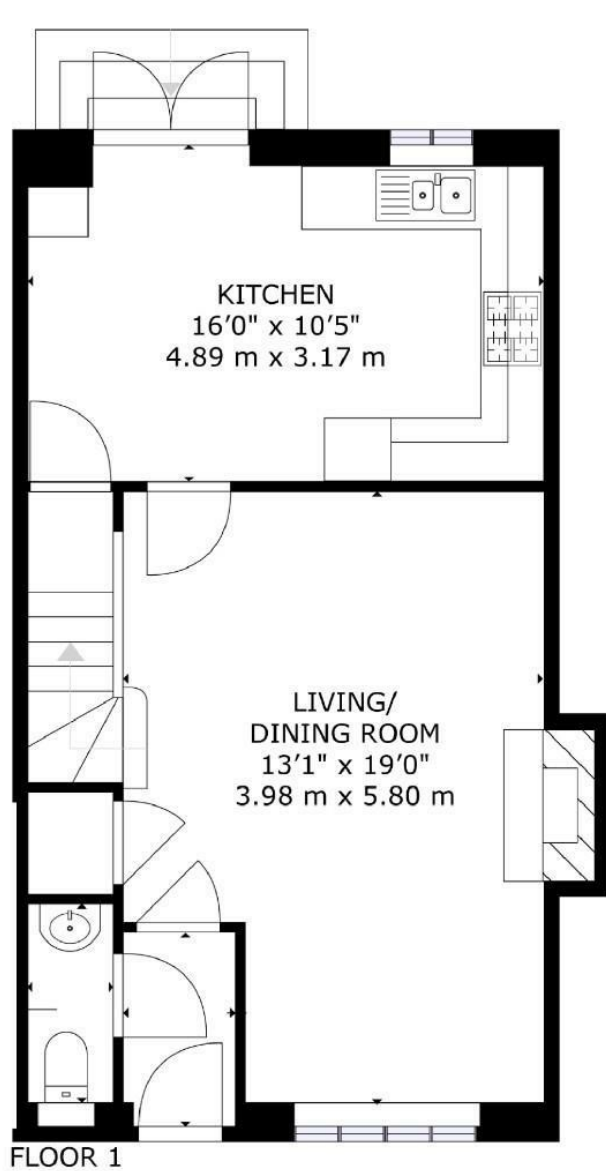


HUNTERS®

HERE TO GET *you* THERE

Property Images





SIZES AND DIMENSIONS ARE APPROXIMATE, ACTUAL MAY VARY.

Energy Efficiency Rating		
	Current	Potential
Very energy efficient - lower running costs		
(92 plus) A		88
(81-91) B		
(69-80) C	75	
(55-68) D		
(39-54) E		
(21-38) F		
(1-20) G		
Not energy efficient - higher running costs		
England & Wales	EU Directive 2002/91/EC	



New Close Mill Fold, Silsden, this end town house offers a perfect blend of modern living and comfort. Set in a quiet no-through-road residential development, just a stone's throw from the bustling Main Street.

Spanning an impressive 958 square feet, this property is ideal for families or those seeking a spacious home. Also been a successful lettings property, with no forward chain.

Upon entering, you are welcomed into a bright and airy living room, complete with a contemporary fireplace that adds a touch of warmth and elegance, and a staircase ascends to the first floor. The ground floor boasts a generous dining-kitchen, which is a true highlight of the home. With French doors that open onto the enclosed rear garden, this space is perfect for entertaining or enjoying family meals while basking in natural light. The modern kitchen is equipped with integrated appliances, making cooking a pleasure.

The first floor comprises two well-proportioned double bedrooms and a large single bedroom, providing ample space for relaxation and rest. The modern bathroom features a shower over the bath, catering to all your bathing needs.

Outside, the property benefits from two designated parking spaces at the front, ensuring convenience for you and your guests. The enclosed rear garden is a lovely retreat, complete with a sizeable shed for additional storage or hobbies.

This modern end terrace house is not just a property; it is a home that offers comfort, style, and practicality in a desirable location.

Features

- No forward chain • Modern end town house, built in 2011 • Dining-kitchen • French doors onto an enclosed garden • 2 double bedrooms and a large single • 2 private parking spaces • Handy for town, bars, restaurants and 2 supermarkets • Metro train station 5 minute drive away • Ideal first time buyer or lettings property • Mortgage advise available